

National Geodetic Survey, Retrieval Date = OCTOBER 4, 2000

KE1649 \*\*\*\*\*

KE1649 DESIGNATION - Z 341  
 KE1649 PID - KE1649  
 KE1649 STATE/COUNTY- MO/BUCHANAN  
 KE1649 USGS QUAD - ST JOSEPH NORTH (1978)

\*CURRENT SURVEY CONTROL

KE1649	NAD 83(1986)-	39 45 42.	(N)	094 49 44.	(W)	SCALED
KE1649	NAVD 88	- 264.823	(meters)	868.84	(feet)	ADJUSTED
KE1649	GEOID HEIGHT-	-31.93	(meters)			GEOID99
KE1649	DYNAMIC HT -	264.668	(meters)	868.33	(feet)	COMP
KE1649	MODELED GRAV-	980,035.6	(mgal)			NAVD 88

KE1649 VERT ORDER - FIRST CLASS II

KE1649 The horizontal coordinates were scaled from a topographic map and have  
 KE1649 an estimated accuracy of +/- 6 seconds.

KE1649 The orthometric height was determined by differential leveling  
 KE1649 and adjusted by the National Geodetic Survey in June 1991.

KE1649 The geoid height was determined by GEOID99.

KE1649 The dynamic height is computed by dividing the NAVD 88  
 KE1649 geopotential number by the normal gravity value computed on the  
 KE1649 Geodetic Reference System of 1980 (GRS 80) ellipsoid at 45  
 KE1649 degrees latitude (g = 980.6199 gals.).

KE1649 The modeled gravity was interpolated from observed gravity values.

KE1649		North	East	Units	Estimated Accuracy
KE1649	SPC MO W -	399,060.	821,820.	MT	(+/- 180 meters Scaled)

SUPERSEDED SURVEY CONTROL

KE1649 No superseded survey control is available for this station.

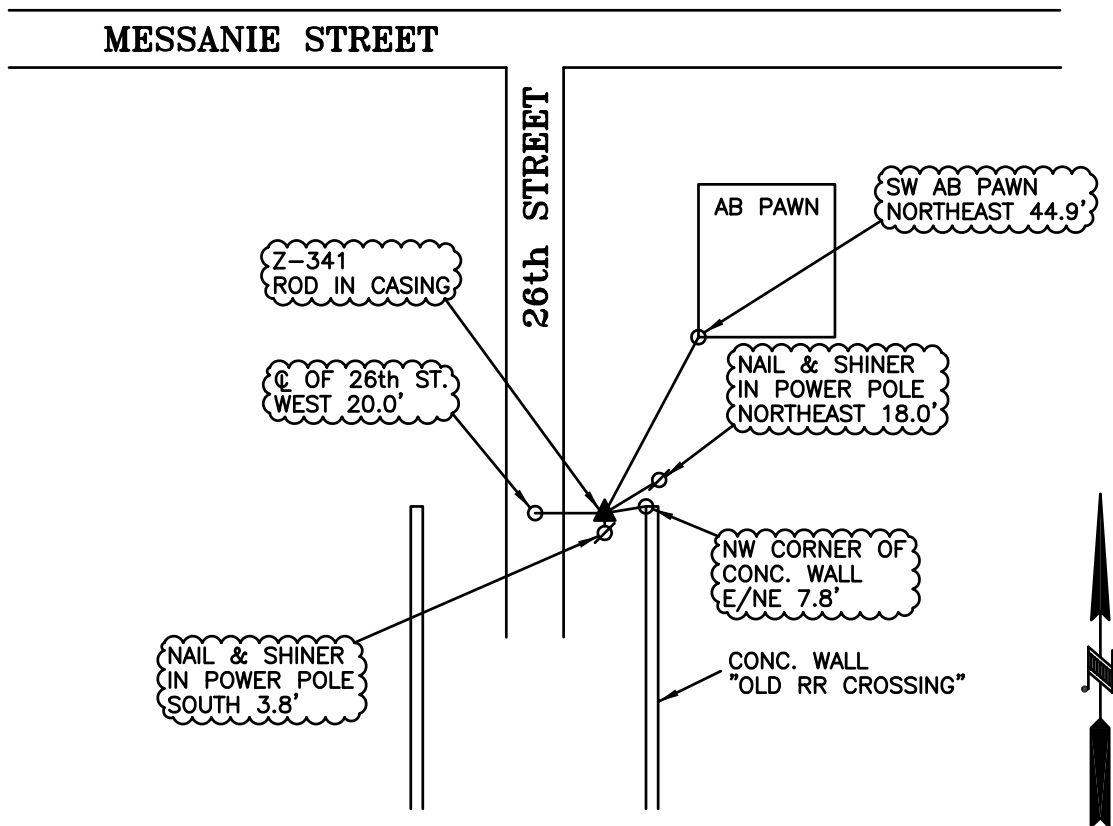
KE1649 MARKER: I = METAL ROD  
 KE1649 SETTING: 49 = STAINLESS STEEL ROD W/O SLEEVE (10 FT.+)  
 KE1649 STAMPING: Z 341 1989  
 KE1649 PROJECTION: FLUSH  
 KE1649 MAGNETIC: I = MARKER IS A STEEL ROD  
 KE1649 STABILITY: B = PROBABLY HOLD POSITION/ELEVATION WELL  
 KE1649 SATELLITE: THE SITE LOCATION WAS REPORTED AS NOT SUITABLE FOR  
 KE1649 SATELLITE: SATELLITE OBSERVATIONS - 1989  
 KE1649 ROD/PIPE-DEPTH: 17.7 meters

KE1649	HISTORY	- Date	Condition	Recov. By
KE1649	HISTORY	- 1989	MONUMENTED	NGS

STATION DESCRIPTION

KE1649 DESCRIBED BY NATIONAL GEODETIC SURVEY 1989  
 KE1649 IN ST JOSEPH, AT THE INTERSECTION OF MESSANIE BOULEVARD AND 26TH  
 KE1649 STREET, 54.7 M (179.5 FT) SOUTH OF THE CENTERLINE OF THE BOULEVARD,  
 KE1649 13.7 M (44.9 FT) SOUTHWEST OF THE SOUTHWEST CORNER OF THE A-B PAWN  
 KE1649 SHOP, 5.8 M (19.0 FT) EAST OF THE CENTERLINE OF THE STREET, 1.0 M  
 KE1649 (3.3 FT) NORTH OF UTILITY POLE NUMBER 2606, AND 0.2 M (0.7 FT) ABOVE  
 KE1649 THE LEVEL OF THE STREET. NOTE--ACCESS TO THE DATUM POINT IS THROUGH  
 KE1649 A 5-INCH LOGO CAP.

TO REACH: FROM NOYES BLVD. (28th ST.) & MESSANIE  
GO WEST ON MESSANIE FOR 0.25 MILES TO 26th  
STREET, THEN GO LEFT ON 26th ST. FOR 0.03  
MILES TO STATION ON LEFT.





Z-341 (LOOKING EAST)



Z-341 (LOOKING NORTH)