

# CITY OF ST. JOSEPH HEALTH DEPARTMENT



**Public Health**  
Prevent. Promote. Protect.

COVID-19 Briefing  
April 5, 2021

# COVID-19 VACCINE DASHBOARD

[HTTPS://COVIDVACCINE.MO.GOV/DATA/](https://COVIDVACCINE.MO.GOV/DATA/)

County Name	Total Doses Administered (Includes first and second doses)	Number of people who have initiated vaccination	Number of people who have completed vaccination	Share of population who has initiated vaccination	Doses Administered in past seven days
Buchanan	22,016	13,477	8,823	15.4%	2,310

## COVID-19 Vaccinations in Missouri

### Overall Vaccinations in Missouri

This dashboard was last updated on 4/5/2021 and contains data on vaccinations administered through 4/4/2021. Historical numbers, especially over the most recent few days, will update as providers report data to the state. Differences between this dashboard's numbers and those on CDC's dashboard are primarily due to timing.

Total doses administered (includes first and second doses)

**2,710,012**

Number of people who have initiated vaccination

**1,713,877**

Number of people who have completed vaccination

**1,057,241**

Share of population who has initiated vaccination

**27.9%**

(17.2% have completed vaccination)

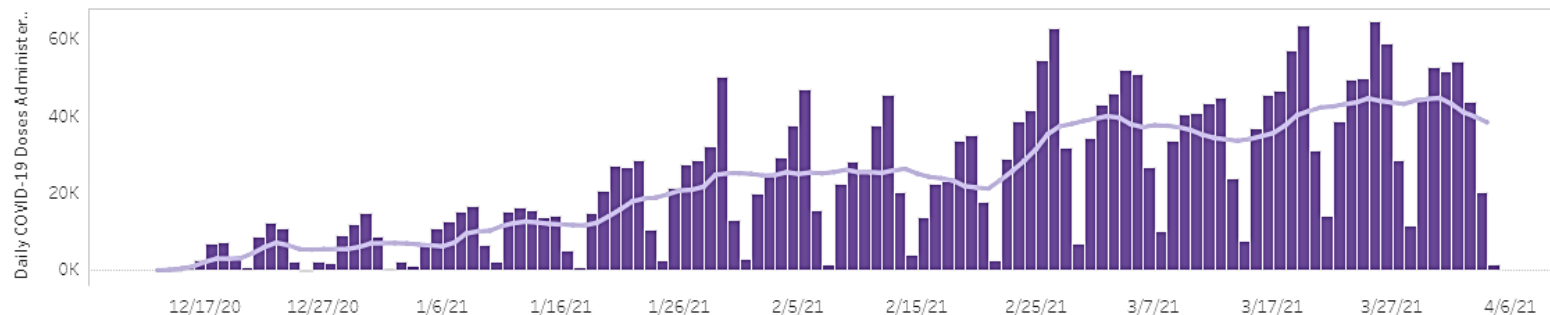
Doses administered in past 7 days (3/27/2021 through 4/2/2021)

**287,748**

(average of 41,107 per day)

### Doses Administered Over Time

Line represents 7-day average. Note that data from the most recent days may be incomplete because of delays in reporting.



# COVID-19 IN BUCHANAN COUNTY

	Total Cases	Confirmed Cases	Probable Cases	Deaths	Positivity Rate
Total Count	10,259	7,210	3,049	179	3.53%
Change Since Last Report	5	4	1	0	N/A

**Confirmed case:** The case meets the confirmed laboratory evidence, which is the detection of SARS-CoV-2 RNA in a clinical specimen using an approved detection test verified by a certified testing laboratory.

**Probable case:** The case meets clinical criteria AND epidemiologic evidence (close contact with a confirmed or probable case; travel to or residence in an area with sustained, ongoing community spread; or a member of a risk cohort as defined by public health authorities during an outbreak), with no confirmatory laboratory testing performed for COVID-19.

**Positivity Rate** - The 7-day positivity rate is based on PCR and Antigen testing rates for Buchanan County residents and will be updated once a week on Mondays.

**Currently Hospitalized** – Mosaic Daily Inpatient Update: COVID-19 patient count is minimal. If the Mosaic system has more than ten COVID-19 inpatients, their website will be updated <https://www.mymc.com/General/coronavirus-covid-19/#DailyInpatientUpdate>.

## BUCHANAN COUNTY TESTING POSITIVITY RATE

7 Day Positivity Rate for PCR & Antigen Tests

**3.53%**

Number Tested via PCR or Antigen Tests

**991**

## MISSOURI TESTING POSITIVITY RATE

7 Day Percent Positive of PCR Tested Individuals (CDC Method)

**4.5%**

Cumulative PCR Positivity Rate

**16.9%**

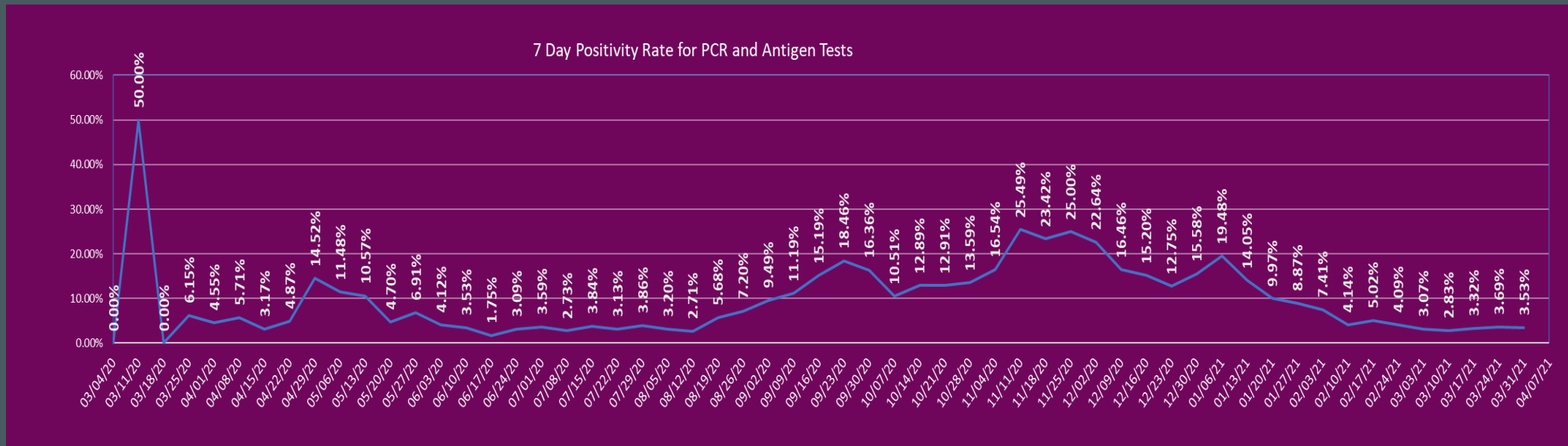
## US TESTING POSITIVITY RATE

Overall % Positive

**8.56%**

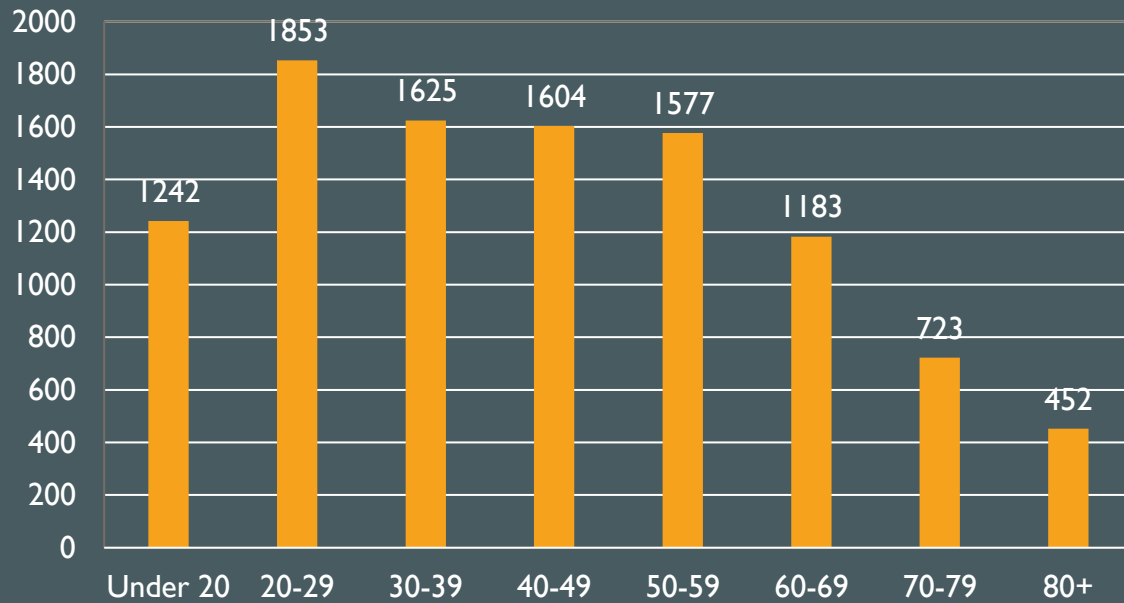
# BUCHANAN COUNTY TESTING POSITIVITY RATE

MARCH 25-31, 2021

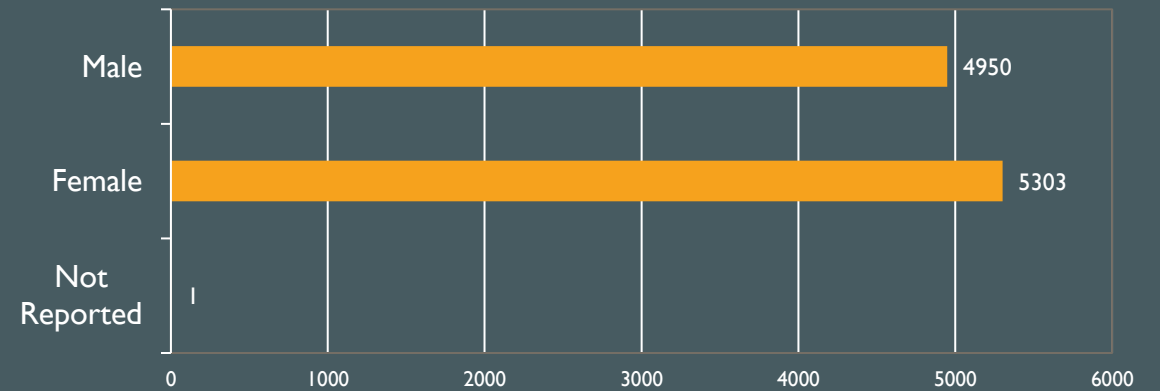


# BUCHANAN COUNTY COVID-19 CASE DEMOGRAPHICS

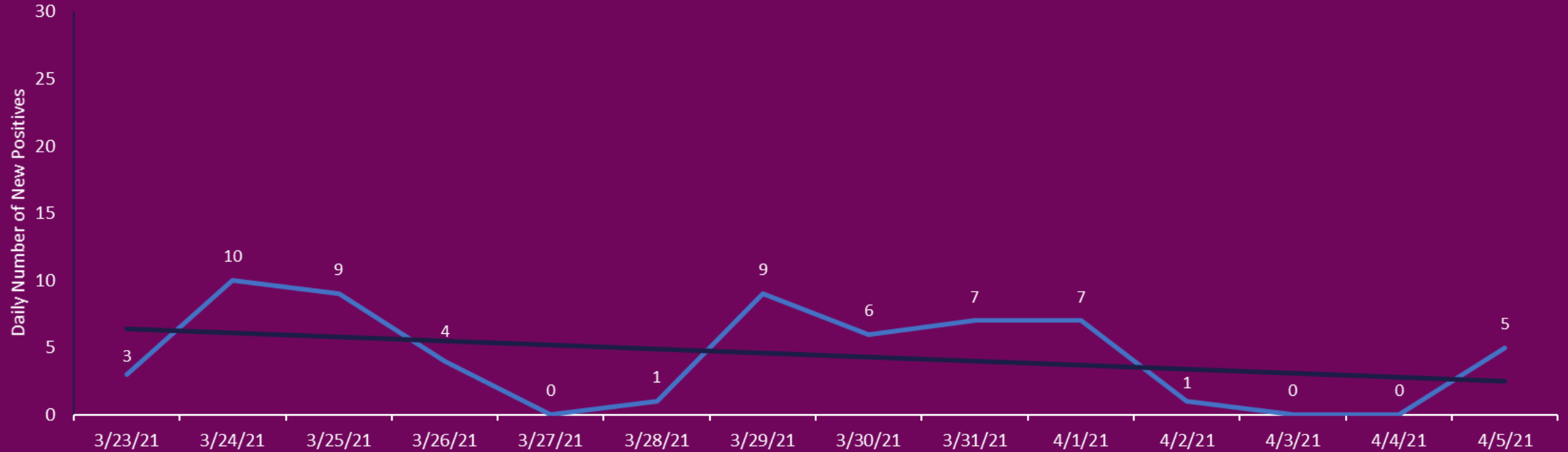
Buchanan County Cases by Age Range



Buchanan County Cases by Gender



### Buchanan County 14-Day Trend Report March 23 - April 5, 2021



This chart shows the number of new positive COVID-19 cases per day. The straight line indicates the trend.

### BUCHANAN COUNTY 14-DAY TREND

This is the number of new cases over the past 14 days.

The straight line shows the trend of new cases.

# BUCHANAN COUNTY COVID-19 VACCINATION LOCATIONS

## IMPORTANT NOTES:

Individuals must fall within the state's current vaccination priority phases. Visit <https://covidvaccine.mo.gov>. On April 9th, all remaining Missourians become eligible for vaccine.

\*\*Please note that these locations are not guaranteed to have vaccines available at all times.

The City of St. Joseph Health Department does not have specifics on the vaccination process at these locations. Please visit their websites or call for more details.\*\*

## The Community Clinic

East Hills Shopping Center (Gordman's former location) 3702 Frederick Avenue, St. Joseph, MO

<https://mymlc.com/vaccine> 816.271.4613

## Pharmacy Locations

### CVS

3320N Belt Hwy, St Joseph, MO 64506  
<https://www.cvs.com/coronavirus>

### Hy-Vee

201 N Belt Hwy, St Joseph, MO 64506  
<https://www.hy-vee.com/my-pharmacy/covid-vaccine>

### Rogers

N Belt Hwy, St Joseph, MO 64506  
(816) 232-3348—Choose option 10 to register

### Sam's Club

5201 N Belt Hwy Ste A St Joseph MO 64506  
<https://samsclub.com/covid>

### Walgreens

4022 N Belt Hwy, Saint Joseph  
3645 Frederick Ave, Saint Joseph 64506  
2620 S Belt Hwy, Saint Joseph 64503  
<https://www.walgreens.com>

### Walmart

4201 N Belt Hwy, St Joseph MO 64506  
3022 S Belt Hwy St Joseph MO 64503  
<https://www.walmart.com/COVIDvaccine>

## Northwest Missouri (Region H) Mass Vax Events

Sponsored by State of Missouri, local health officials and  
Missouri National Guard  
<https://covidvaccine.mo.gov/events/>

## Senior & Disabled Vaccine Registration Assistance

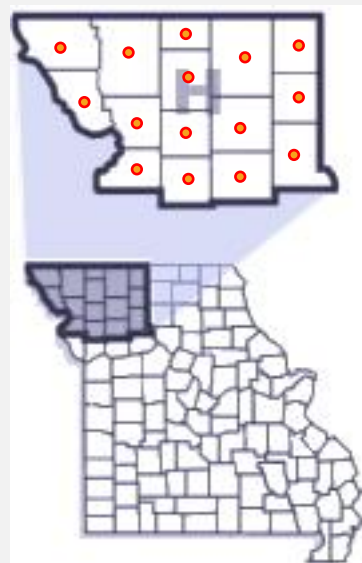
Seniors and those who are disabled in NWMO can seek assistance with vaccination registration, coordinating round trip transportation for vaccination appointments, and setting up reminder calls! Contact  
**Young at Heart Resources 1-888-844-5626**  
<https://www.yahresources.org/>

# COVID-19 IN REGION H

Region H: 25,471 Cases

502 Deaths

County	Total cases	Deaths
Andrew	2,025	20
Atchison	442	13
Buchanan	10,259	179
Caldwell	862	12
Clinton	2,072	69
Daviess	673	14
DeKalb	1,114	18
Gentry	784	19
Grundy	1,061	40
Harrison	1,014	18
Holt	518	15
Livingston	1,436	51
Mercer	341	9
Nodaway	2,654	23
Worth	216	2



Regional cases include confirmed cases reported to the Missouri Department of Health and Senior Services and real time data collected from regional local public health agencies.

Cases are updated each day on the Missouri Department of Health website.

- Source: Missouri Department of Health and Senior Services



# COVID-19 IN MISSOURI

Missouri COVID-19 Dashboard will provide COVID-19 data for state and county levels:

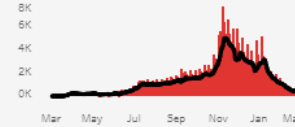
## COVID-19 in Missouri

Note: Please see our "Details about Metrics" page for a message regarding Pettis County data.

### COVID-19 in Missouri to Date

Confirmed PCR Cases to Date

**491,133**



Probable Antigen Cases to Date

**88,722**

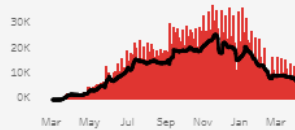


Confirmed Deaths to Date

**8,504**

PCR Tests to Date

**4,955,003**



Antigen Tests to Date

**1,199,421**



### COVID-19 in Missouri - Past 7 Days (based on date of occurrence)

Confirmed PCR Cases: Past 7 Days

**1,948**

(daily avg. of 278)

4/3	4/2	4/1	3/31	3/30	3/29	3/28
107	238	304	318	347	418	216

Probable Antigen Cases: Past 7 Days

**1,337**

(daily avg. of 191)

4/3	4/2	4/1	3/31	3/30	3/29	3/28
120	174	236	149	228	279	151

PCR Tests: Past 7 Days

**49,922**

(total daily avg. of 7,132)

4/3	4/2	4/1	3/31	3/30	3/29	3/28
2,979	6,465	6,058	7,697	9,718	13,176	3,829

Antigen Tests: Past 7 Days

**30,148**

(total daily avg. of 4,307)

4/3	4/2	4/1	3/31	3/30	3/29	3/28
1,155	1,944	3,864	4,958	6,282	7,639	4,306

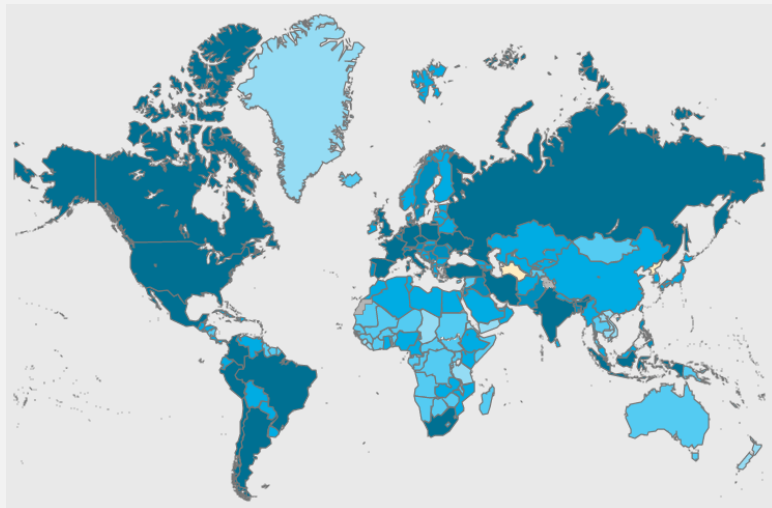
<https://showmestrong.mo.gov/data/statewide-public-health/>

# COVID-19

Worldwide as of April 5, 2021

Total Cases: 131,020,967

Total Deaths: 2,850,521



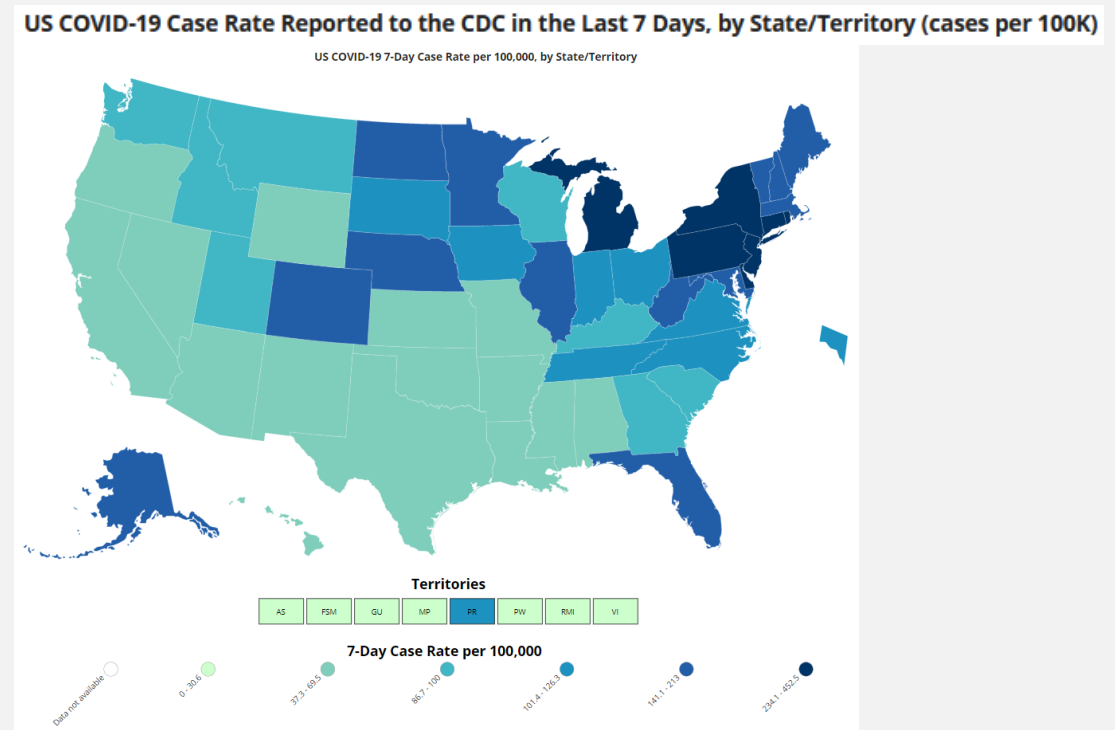
\* Source: World Health Organization

You likely notice a difference in the case counts if you are following other organizations, such as Johns Hopkins. The CDC updates case totals each day, reporting the cases numbers from the previous day. Other sites use sources for real time counts.

United States as of April 5, 2021

Total Cases: 30,532,965

Total Deaths: 554,064



\* Source: Center for Disease Control and Prevention

# SOURCES OF INFORMATION



**Missouri Department of Health  
and Senior Services**

<https://health.mo.gov/living/healthcondiseases/communicable/novel-coronavirus/>



**Center for Disease Control and  
Prevention**

<https://www.cdc.gov/coronavirus/2019-ncov/index.html>